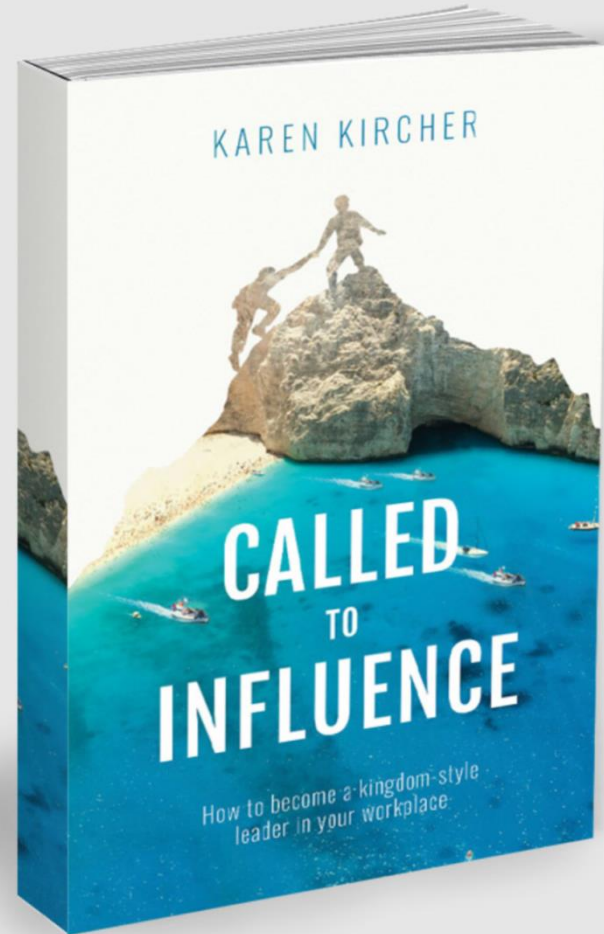
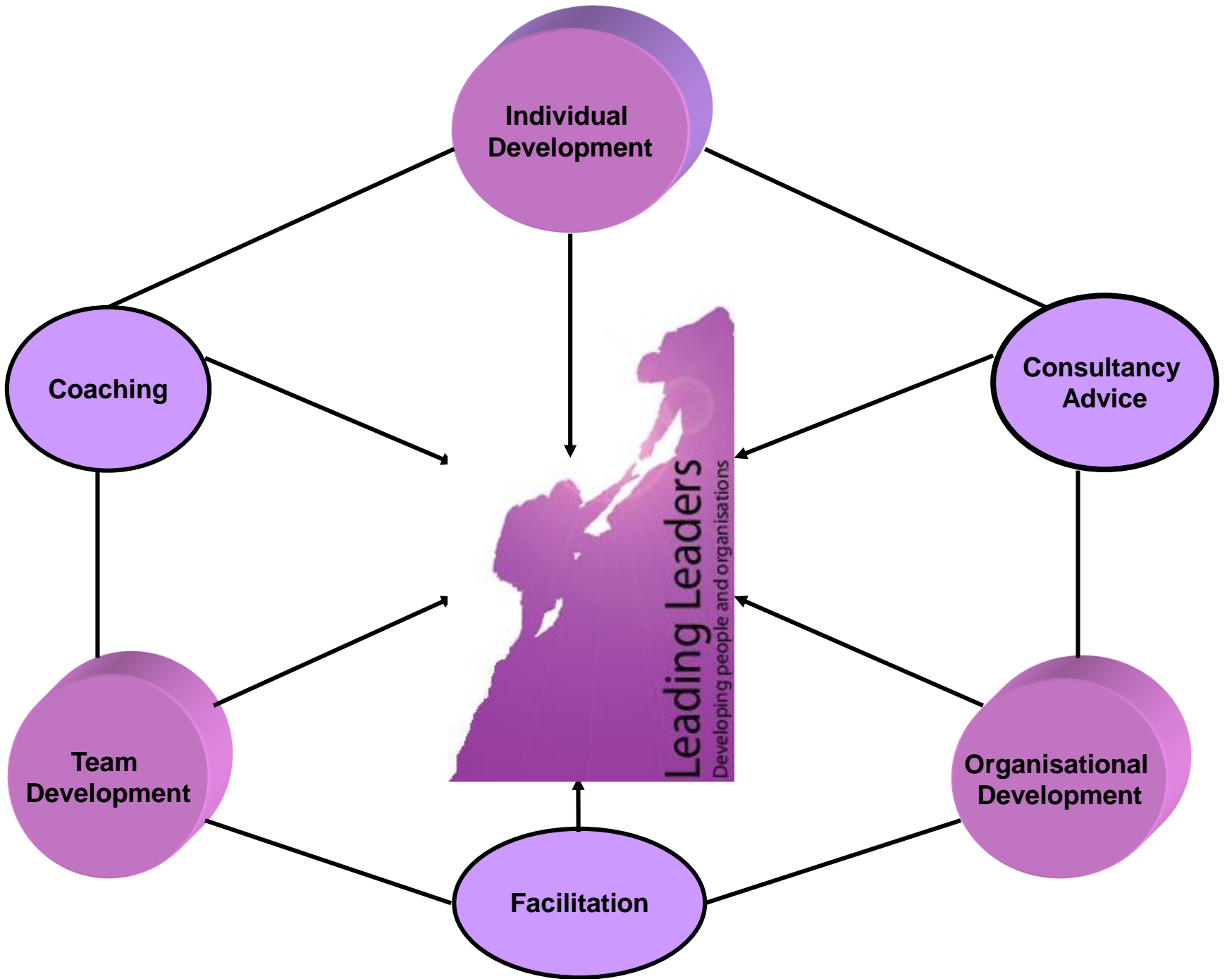


Called to Influence







Godly Definition of Work

‘The daily exertion, paid or unpaid, in contrast to rest and leisure, which is consistent with God’s will, image and design’. (Rodney Green, 90,000 Hours, Managing the World of Work)

Colossians 3:2 ‘Whatever you do work at it with all your heart, as working for the Lord, not for men...’

Mountains/Spheres of Influence

A = Arts & Entertainment

B = Business and Commerce

C = Church: social and community action

D = Distribution of Media

E = Education

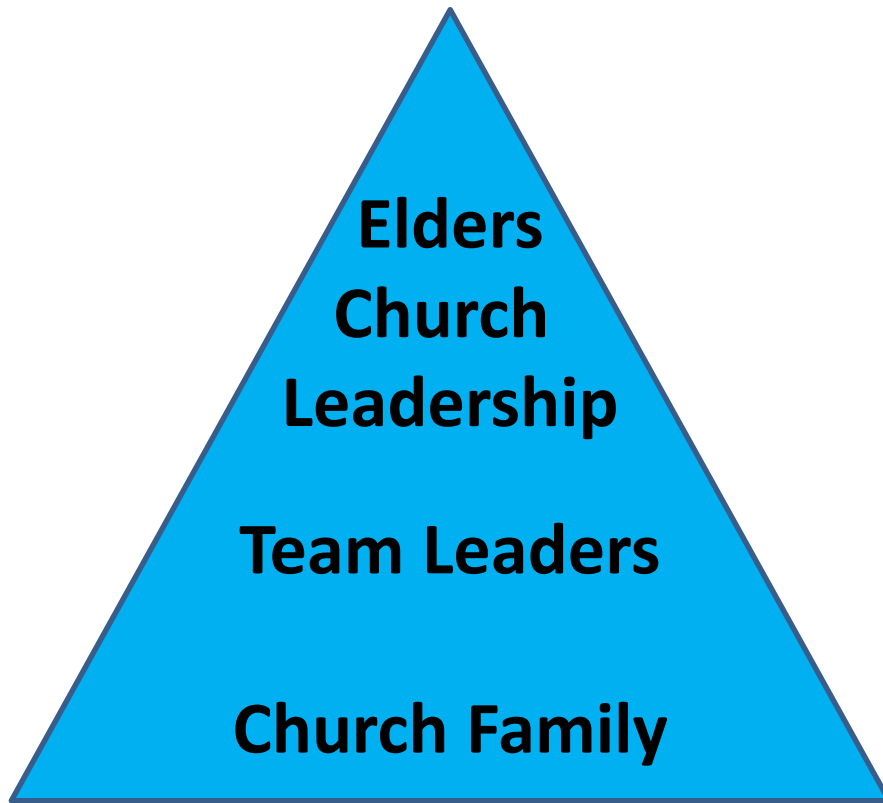
F = Family

G = Government

H = Healthcare

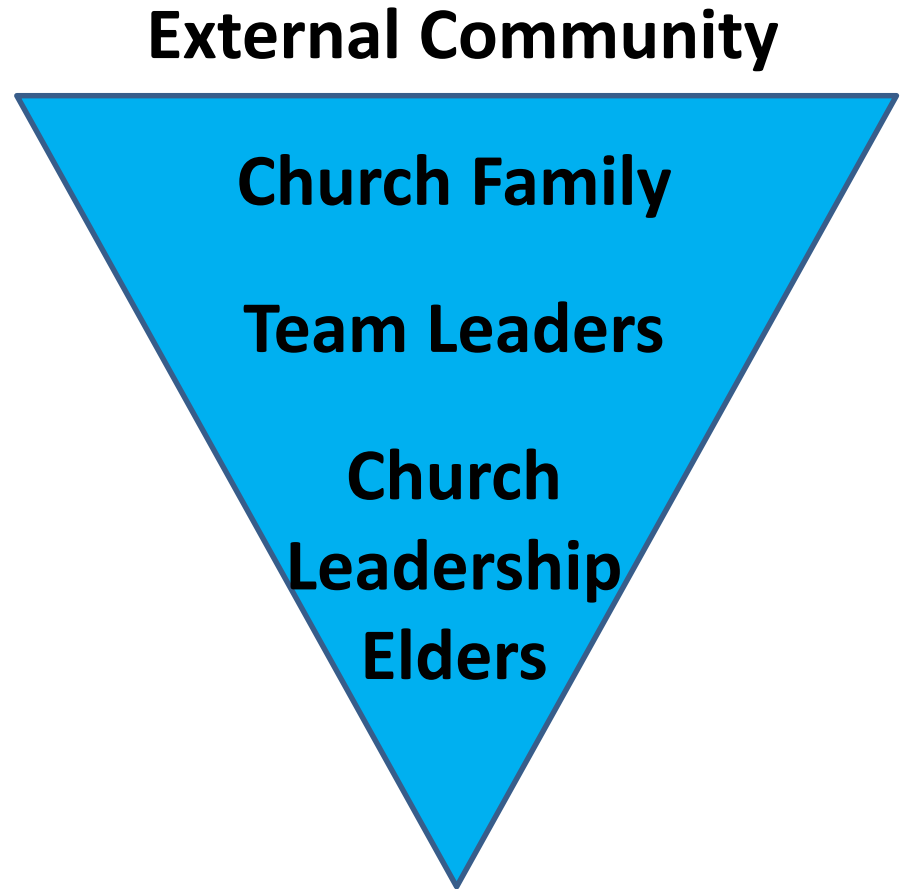
You, as Church, are called to influence wherever God has placed you.

Church hierarchical serving model



External Community

Church outreach serving model



External Community

How to Influence as a Kingdom-style Leader

- 1. Your identity (as a child of God)**
- 2. Kingdom not earth perspective**

7 Signs of the Kingdom

1. **God's Presence:** 'The Spirit of the Lord God is upon me'
2. **Justice (Righteousness):** 'because the Lord has anointed me to bring good news to the poor'
3. **Healing:** 'he has sent me to bind up the broken-hearted'
4. **Salvation and Deliverance (Freedom):** 'to proclaim the liberty for the captives, and the opening of the prison to those who are bound'
5. **Peace:** 'to proclaim the year of the Lord's favour'
6. **Comfort:** 'to comfort all who mourn'
7. **Joy:** 'the oil of gladness instead of mourning, the garment of praise instead of faint spirit'

How to Influence as a Kingdom-style Leader

- 1. Your identity (as a child of God)**
- 2. Kingdom not earth perspective**
- 3. Covert Operations (the undercover mission)**
- 4. Overt Operations (revealing who God is)**
- 5. Partner with The Holy Spirit**
- 6. The Culture of Honour**
- 7. Obedience and Courage**
- 8. Don't travel alone**

Called to Influence

